

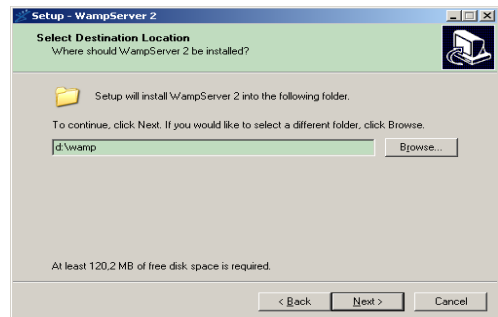
IntraMessenger – Server installation on a MS-Windows computer

Install IntraMessenger inside XAMPP-Lite is strongly recommended for beginners, otherwise follow the instructions below.

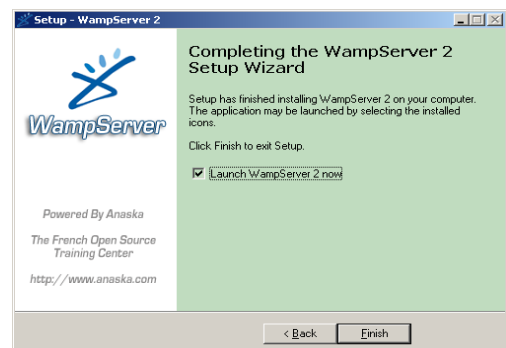
1. Download WampServer : <http://www.wampserver.com/en/>
2. Start install :



3. Choose a directory (example d:\wamp\)



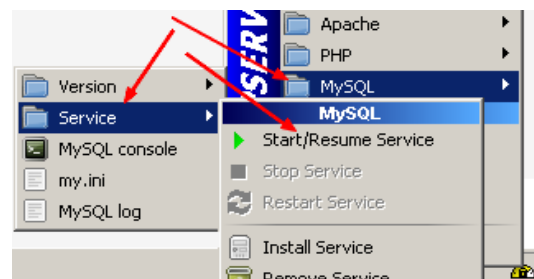
4. Finish setup



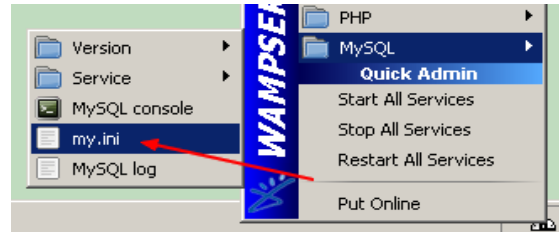
5. WampServer start (default status is « offline », so cannot access from another computer, need to clic on « Put One Line » for it be).



6. Check MySQL is running :
clic on tray icon (near clock, see §5),
and open menu :
MySQL-Service : if clic on Start/Resume
MySQL start, go to §9, other continu to §7.



7. Open menu 'MySQL'-'my.ini'.



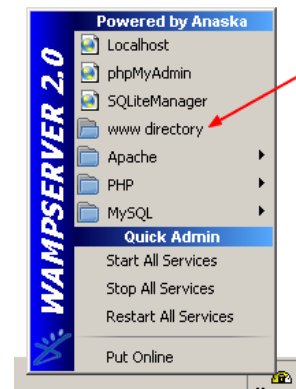
8. At row 83 :

```
# The default storage engine that will be used when create new tables
default-storage-engine=INNODB
```

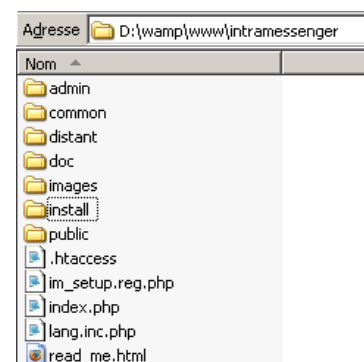
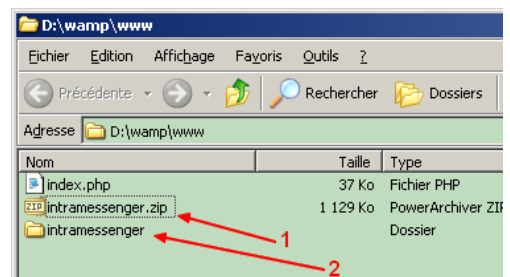
Replace *INNODB* by *MyIsam* (save and quit) :

```
# The default storage engine th
default-storage-engine=MyIsam
```

9. Open published directory www :



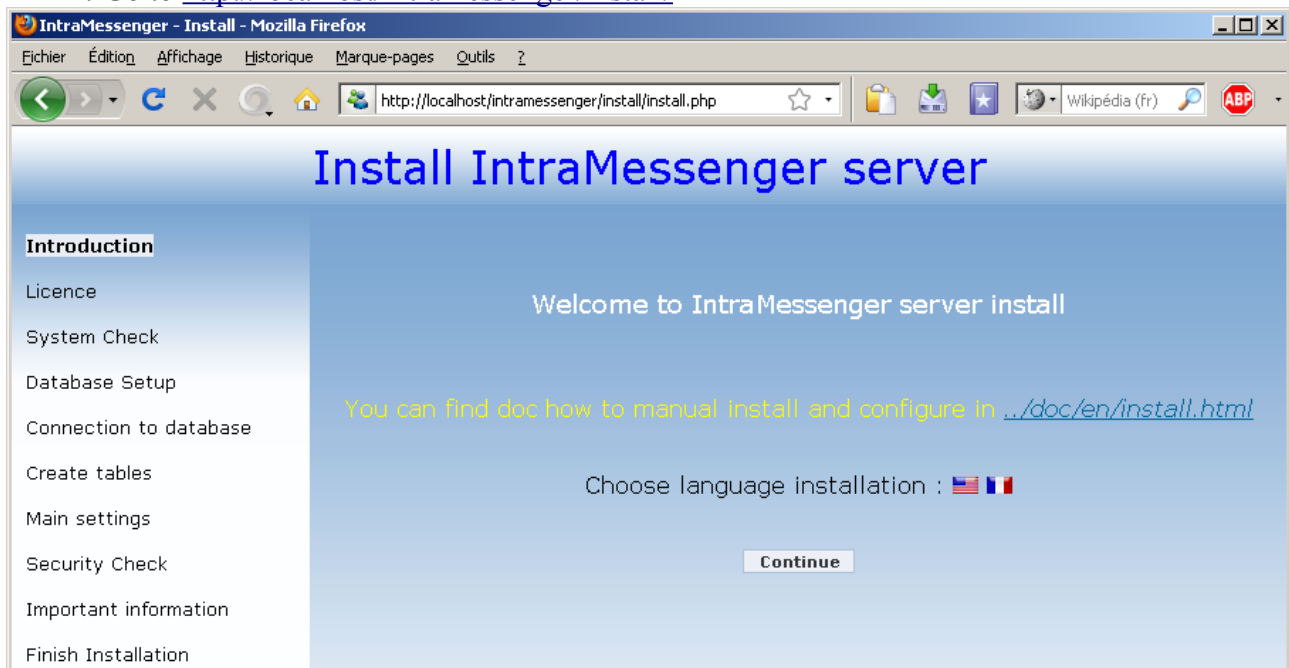
10. Paste intramessenger.zip (1) and unzip in same name directory (2).



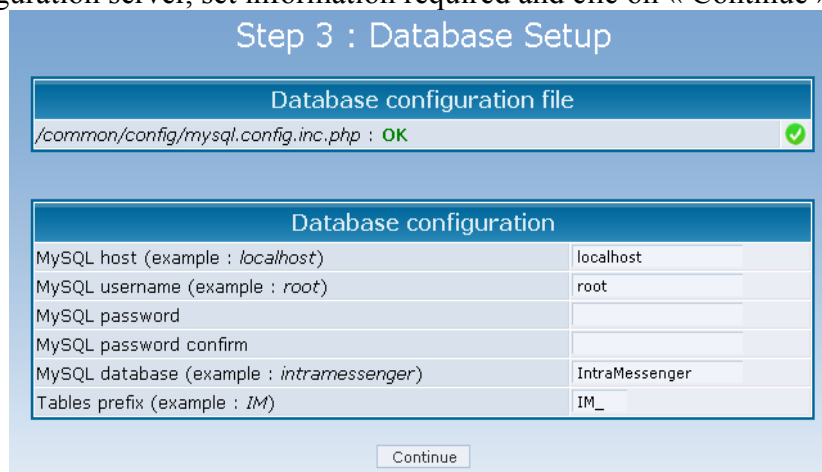
Documentation is in folder [/doc/en/](#)

Must read (double clic) : [install.html](#) (and [changelog.html](#) before next updates)

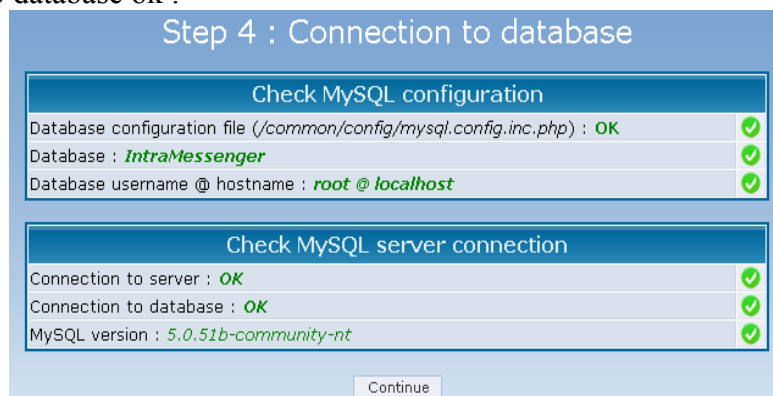
11. Go to <http://localhost/intramessenger/install/>



12. Choose language and clic on « Continue »
13. [1] Accept the licence (GNU-GPL)
14. [2] System Check – clic on « Continue »
15. [3] Configuration server, set information required and clic on « Continue »



16. [4] Acces to database ok :



17. [5] Create tables and clic on « Continue »

18. [6] Modify main options and clic on «Update »

Step 6 : Main settings

Check configuration

Configuration file (<i>/common/config/config.inc.php</i>) : OK	✓
Language : EN	✓
Language (charset) : English (iso-8859-1)	✓

Options list		Advice	
Value	Comment	LAN	Internet
EN ▾	Language : EN / FR / IT / PT / RO		
0	Maximum registered users (0 : unlimited).		
200	Maximum sessions (users simultaneously connected) (0 : unlimited).		
40	Maximum contacts by user (0 : unlimited).		
<input type="checkbox"/>	Display the country flag of IP address (internet usage).	👎	👍

19. [7] If you not use extern authentication, and a new install, you may choose a strong password to improve security in file `/common/config/auth.inc.php`
20. [8] Delays can appear on certain computers, it's a DNS problem, [to solve it read the forum.](#)
21. [9] Clic on « Continue » until acces to « check config » screen :

Check configuration (after all updates)

Configuration file (<i>/common/config/config.inc.php</i>) : found	✓
Configuration file (<i>/common/config/extern.config.inc.php</i>) : found	✓
Language : English (EN)	✓

Check last options

All new options are OK in configuration file	✓
---	---

Check MySQL server connection

Connection to server : OK	✓
MySQL version : <i>5.0.51b-community-nt</i>	✓
Connection to database : OK	✓

22. Go to « admin control panel » (ACP) :

Optimize tables

All tables are just optimized (on problem, try to [repair](#)) ✓

Please read version history in file : [../doc/en/changelog.html](#)

Better to add the file [im_setup.reg](#) (more easy for end users to setup)

Configuration/update is OK
you can go now to [admin panel](#)

23. Clic on « Update options » and then, clic on « Save options » (bottom) :

BE CAREFUL ! You must rename `/admin/` folder (before user can connect)

Better to delete `/install/` folder (keep only when upgrade version)

Be careful, maintenance mode is activated, users cannot communicate (and offline users)

Better to add the file `im_setup.reg` (more easy for end users to install)

Update options

Option	Value	Comment
<code>_MAX_NB_USER</code>	0	Maximum registered users (0 : unlimited).
<code>_MAX_NB_SESSION</code>	200	Maximum sessions (users simultaneously connected) (0 : unlimited).
<code>_MAX_NB_CONTACT_BY_USER</code>	40	Maximum contacts by user (0 : unlimited).
<code>MAX_NB_IP</code>	0	Maximum simultaneous IP addresses (0 : unlimited).

New users are automatically added.

Automatically added users must be validated by administrator.

Enable hierarchic management, display level col (in admin area).

Your options does NOT enables you to be registered on : internet.IntraMessenger.public.servers.directory

Optional startup splashscreen (internet usage)		Advice	
Value	Comment	LAN	Internet
	Website URL (address)		👍
	Website title		👍

If both empty, no splashscreen on client startup

Save options

Legend : Advice

24. Change folder name : `/admin/`

25. Delete or rename folder `/install/`

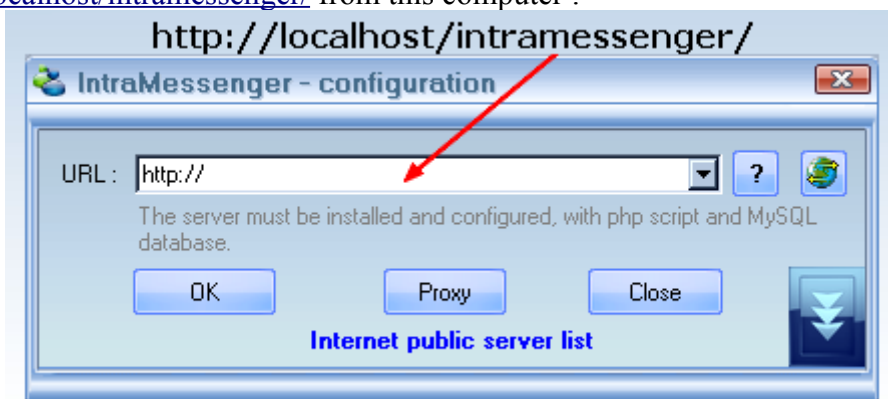
26. Create file : `im_setup.reg` (follow link)

27. To use [external authentication](#), choose type, and set parameters (if necessary),

28. Unactive option « Maintenance mode ».

29. Now, you can use IntraMessenger « client » and connect to your server

<http://localhost/intramessenger/> from this computer :



30. Replace « localhost » by you IP address to connect from another computer. Check that server is « online » (see chapter 5).

31. **Before** all updates, read the new documentation `/doc/en/changelog.html`

32. **After** all updates use menu (« Check config ») to check new options, and tables structure.

Tutorial how to install wamp :

<http://www.youtube.com/watch?v=DqEdTWjSnAQ&>

<http://www.youtube.com/watch?v=4W4Ok4vDssI&>